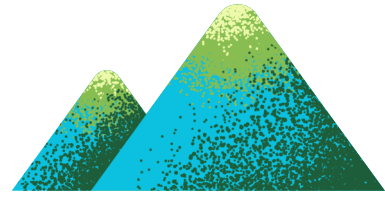


# Important REMINDERS



- You will require a **provincial park pass** to visit Kananaskis and a **national park pass** to visit Banff, Yoho, Jasper, Kootenay, and Glacier National Parks.
- Pack layers and decent footwear - mountain weather and conditions can change at any time.
- Go early in the morning or later in the day to popular sites and attractions. Mid-day is the busiest time.
- Bear bells have been proven to not have any effect. Human voices and bear spray are the best measures.
- Always keep your distance from wild animals. Getting too close or feeding them puts the animal in danger.
- Things may happen on your vacation and you may need to choose a plan b. Attitude is everything. Enjoy your vacation! It's adventure time ▲

